

DO YOU HAVE ASH TREES WITH EMERALD ASH BORER DAMAGE?

Learn about the impacts that emerald ash borer insects are causing in NJ and see if you are eligible for a free balled and burlapped replacement tree!

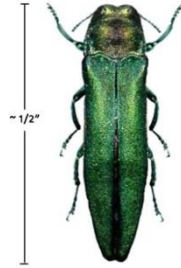


Photo: PADCNR



WHEN: March 8th at 6:00 p.m.

WHERE: Virtual (Zoom)

To register, visit:

<https://forms.gle/hVgWV5nHpJTjVErD6>

Residents of Culver, Owassa, Kemah, Crandon, Swartswood, Paulins Kill, and Clearview Lakes are welcome to participate in this program!

Contact Kristine Rogers

SCMUA-Wallkill River Watershed Management Group

krogers@scmua.org Phone: 973-579-6998 ext. 110